

**Content:** sound hole pickup, endpin, battery holder

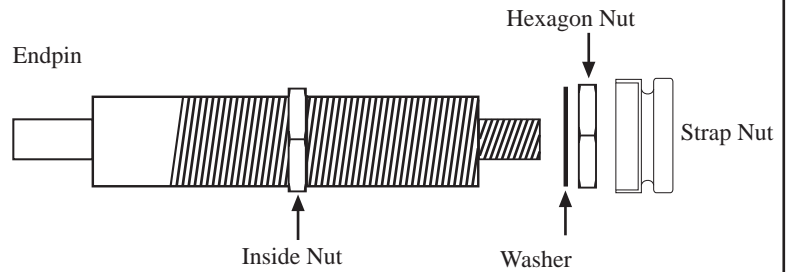


Fig. 1

1. Loosen strings and remove original strap nut.
2. Increase original hole up to 13mm diameter.
3. Remove strap nut, hexagon nut and washer from the endpin.
4. Plug the pickup cable into the endpin.
5. Adjust the inside nut so the larger diameter threads on the endpin stop slightly under the outside of the guitar.

**ATTENTION:** The larger thread has to end inside the frame of your guitar (see fig. 2). Put the washer from the outside on the endpin jack, tighten the hexagon nut by means of a wrench and screw new strap nut on.

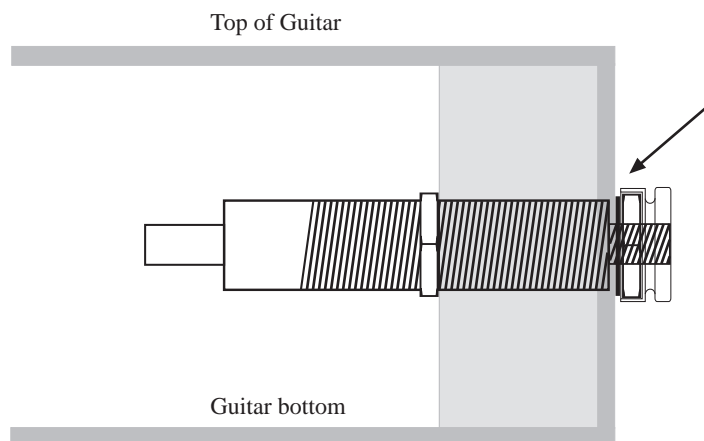


Fig. 2

6. Remove the tape from the pickup-cable-holder and stick it on the inside of the guitar to avoid cable noises.
7. Install the pickup into the sound hole by loosening the screws, place the holder under the top of the guitar and tighten the screws.
8. Tune your guitar.