

Installation Instructions for SH 4000 & SH 4010

Introduction:

Thank you and congratulations for choosing a Shadow pickup system. Shadow preamps are known for the most reliable, user-friendly and best sounding products on the market. As a result of an enormous research and development effort over three years, Shadow releases a revolutionary pickup system. The hexaphonic pickup Nanoflex 6 unites six Nanoflex pickups in one – one for each string.

Installation:

For all preamps you should start with the endpin installation, followed by the Nanoflex pickup installation and finished with the fitting of the preamp. We recommend installation by a professional. The systems are powered with 2 AAA 1,5V Batteries. The preamps turn on automatically as soon as the guitar cable is plugged into the endpin. The battery LED lights on 30 minutes before need to be replaced.

1. Endpin Installation:

Take off the strings, remove original strap nut and increase hole up to 12,5mm diameter. Remove original strap nut and increase hole up to 12,5mm diameter. Remove endpin strap nut, hexagon nut and washer from the endpin (Fig. 1). Mount the endpin as shown on Fig. 2. Adjust the inside nut so that the larger threads end just below the surface of the instrument (Fig. 2, arrow). Put the washer from the outside on the endpin jack. Tighten the hexagon nut with 12mm wrench and screw endpin strap nut on.

FIG. 1

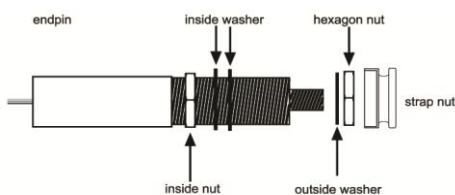
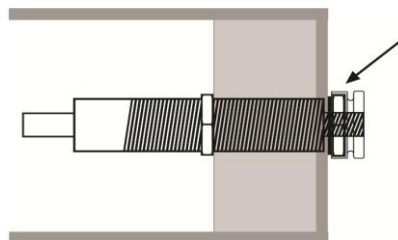


FIG. 2



2. Installation of Nanoflex and Nanoflex 6 Pickup:

Take off the original saddle and drill a 3.1mm diameter hole in the corner of the saddle slot at the bass string side (see Fig.3). The hole has to be drilled in an angle of 30°-45°. Check your bracing before drilling the hole to avoid a damage of it. Clean up the saddle slot and eliminate the wood dust and chips.

Push the pickup cable through the hole in the bridge and place the pickup into the bridge slot showing "NFX top" up towards the saddle. To accommodate the height of the original bridge reduce of the height of the saddle (Fig. 4). Pay attention that the bottom side has to be absolutely flat.

FIG. 3

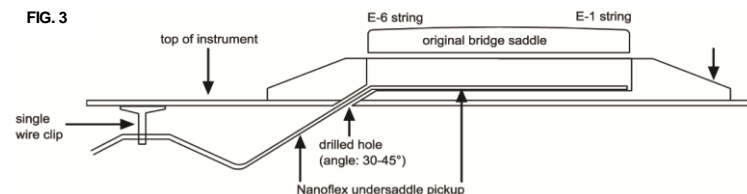
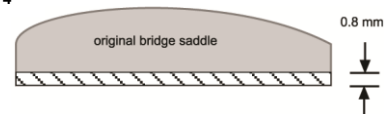


FIG. 4



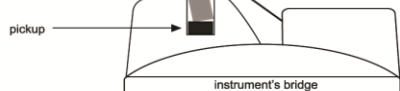
Insert the saddle and secure it temporarily with a piece of tape. Use the single wire clip to secure the wire from the pickup to the underside of the top and secure the cable into it. Failed to secure the wire may produce bizarre audio consequences. Place the double cable holder to the side of the guitar and secure the endpin cable and the pickup cable into it.

Fig. 5

strings

saddle

pickup



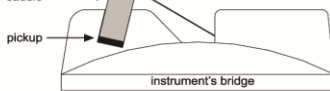
Wrong

Fig. 6

strings

saddle

pickup



inclined classical guitar bridge

Correct

Fig. 7

strings

saddle

pickup



inclined acoustic guitar bridge

Correct

3. Onboard Preamp Installation:

Slide the preamp along the guitar side to find the point where the curve of the preamp matches the curve of the guitar. Mark the positions of the ends of the preamp and place masking tape across the side of the guitar. Measure the total width of the guitar side and mark the center point. Place the template sticker between the stripes of tape with the center marks lined up.

Cut out hole in guitar body following the inside edge of the black line of the template. Place the preamp so that it fits precisely and drill with 1mm drill diameter four outside holes to fix the preamp. Install new batteries. Be sure battery polarity is correct. Connect pickup cable and endpin output cable to the preamp and mount the preamp into the guitar's side. Check if the pickup and preamp are correct working and fix the screws of the preamp. Use included cable holders to fix the cables inside the guitar.

Mount the strings and tune your instrument. Make sure the strings do not pull the bridge saddle forward in neck direction (Fig. 3, 4 & 5). Connect the endpin to an appropriate amplifier.

Note: The battery turns on automatically, as soon as you plug the instrument cable into the endpin. To spare the battery life, take the cable out, when not used.